

# TERRELL MUNICIPAL AIRPORT (TRL)

TERRELL, TEXAS

## AIRPORT PROFILE

Terrell Municipal Airport was the first to host Britain's Royal Air Force during WWII, and maintains an active museum celebrating British and American co-operations. Terrell epitomizes the 'can do' Texas spirit evidenced by the success of the Fortune 500 company divisions who call it home and value its heritage. Located east of Dallas at the junction of Interstate 20 and U.S. 80, it offers you the convenience of Class G airspace. Don your jeans for a horseback ride through the rolling hills, hunt or fish in one of the nearby lakes, shop at the outlet mall, or take a short 30-minute drive to downtown Dallas to watch a professional sporting event.



## SERVICES AND FEATURES INCLUDE

- ▶ 17/35 - 5,006' X 75' runway length
- ▶ PAPI visual landing aid
- ▶ MIRL
- ▶ Lights: DSK-DWN
- ▶ ASOS 119.275
- ▶ UNICOM/CTAF:122.8
- ▶ Fuel on-site (AV Fuel Jet A and 100LL)
- ▶ No landing fee
- ▶ FBO Hours 8:00 a.m. - 6:00 p.m.
- ▶ Full-service FBO terminal with Pilots' lounge, business center, and meeting room
- ▶ WiFi
- ▶ Detailing services
- ▶ Maintenance services
- ▶ Heliport
- ▶ Flight school
- ▶ Charter services
- ▶ Fire extinguishers on-site
- ▶ Fire Department equipped with chemical sprays
- ▶ Golf course and fitness center within 3 miles
- ▶ Courtesy car
- ▶ Rental car pick-up service
- ▶ Hotels and shopping 1 mile away
- ▶ Restaurants within 1 mile of airport
- ▶ Catering available locally



# AIRPORT REAL ESTATE

Terrell Economic Development Corporation offers a variety of economic incentives to support development, ranging from tax abatements to Triple Freeport. There are development opportunities both at the airport and the adjoining business park, with 5 to 40-acre shovel ready sites. Located only 1,000 feet from Interstate 20, Highway 34 and U.S. Highway 80, sites are especially well suited for distribution, attracting companies like Goodyear, Walmart, and Nucor. The Airport Business Park is also undergoing a \$6.5 million expansion. Terrell was recently recognized on *Forbes'* list of America's 100 fastest-growing suburbs. A new 6,000 acre residential development is underway which will house about 40,000 residents - adding to an already outstanding workforce. The airport and business park are both served by the Kaufman Area Rapid Transit.

## HANGARS

- ▶ T-Hangar @ 1,000 square feet for \$150 per month
- ▶ City Hangar @ 6,000 square feet for \$1,000 per month

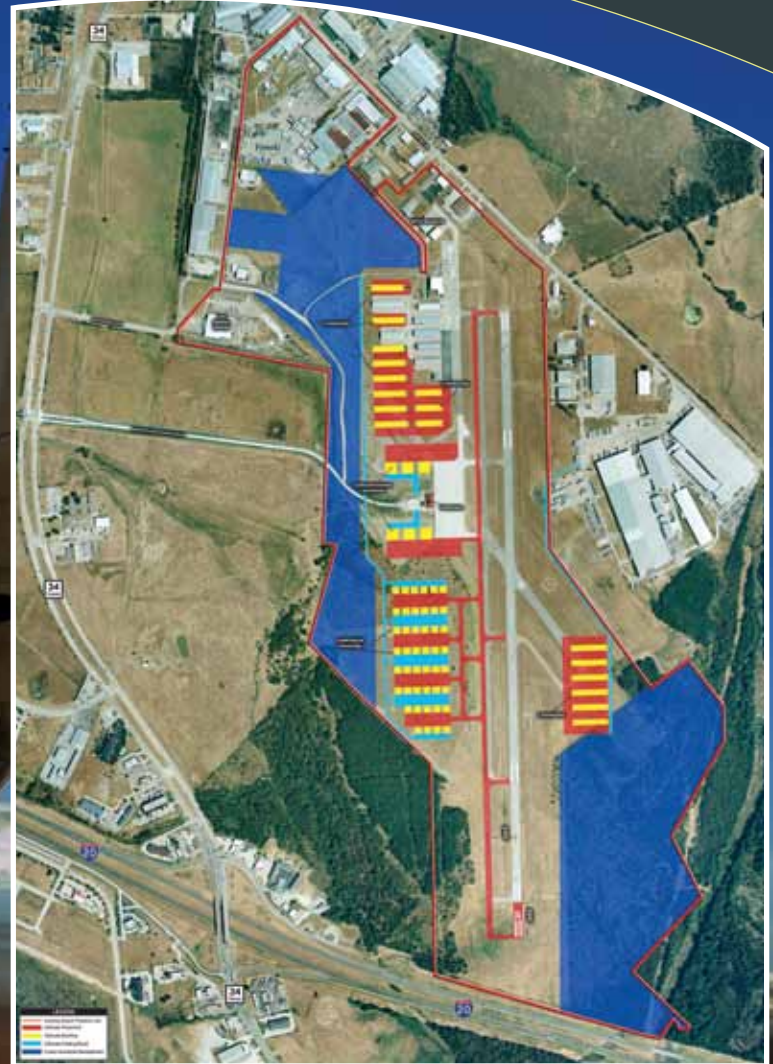
## AIRPORT BUSINESS PARK

### Existing Building: 800 Airport Road

- ▶ Landside of airport
- ▶ Zoned LI
- ▶ 15 acres
- ▶ 190,000 square feet
- ▶ Metal building
- ▶ 25' clear height
- ▶ 25 dock doors
- ▶ ESFR Fire Sprinkler System
- ▶ Electrical (Oncor)
- ▶ 3 miles to electrical substation with redundancy
- ▶ Natural gas (Atmos)
- ▶ Municipal water available (9 MGD capacity)
- ▶ Sewer system capacity 4.5 MGD
- ▶ Fiber optic access
- ▶ Telecommunications provider AT&T
- ▶ HVAC
- ▶ Free parking
- ▶ 35 acres for additional expansion
- ▶ Tenants include Oldcastle Building Envelope, Flexible Foam, Madix and AutoZone

### Developable Land Sites

- ▶ 150 Acres
- ▶ Airport access
- ▶ Adjoining or contiguous acreage for development
- ▶ Zoned LI
- ▶ Surrounding land zoned Light Industrial
- ▶ Topography flat
- ▶ Landside and airside sites available
- ▶ Easement and right of way provided by City
- ▶ Electricity lines
- ▶ 3 miles to substation; redundant available
- ▶ Natural gas
- ▶ Municipal water available; 12" main
- ▶ Sewer system; 18" main
- ▶ Fiber optic access
- ▶ Telecommunications provider AT&T
- ▶ Infrastructure cost participation potential
- ▶ Rail provider UPRR 1/2 mile away
- ▶ Nearest highway 1/2 mile away
- ▶ Price is negotiable



## AIRPORT CONTACT

Terrell Municipal Airport  
201 Silent Wings Blvd.  
Terrell, Texas 75160  
Mike Sims, Assistant City Manager  
City of Terrell  
mikesims@cityofterrell.org  
www.cityofterrell.org  
972.551.6600

Operated by City of Terrell FBO:  
Terrell Aviation, Inc.  
Mark Hardin  
8 a.m. - 6 p.m.  
972.524.1601  
Fax: 972.563.5304  
After hours: 972.835.5395

For Airport Business Park real estate information, contact Danny Booth at the Terrell Chamber of Commerce, 972.563.5703. New Airport Terminal Address: The new airport terminal and entry road is open and located at 400 British Flying School Blvd. off State Highway 34.



SCAN W/ SMARTPHONE

