

E:\SHP FILES\Annexation\2022 Annexation\2022 annexation boundaries.dwg, 1:1

Begin

F.M. 986

N36°00'59"E  
274.83'

N36°13'52"E  
60.60'

N36°14'12"E  
85.58'

Frank & Barbara Rasor  
Vol. 463, Pg. 503

Richard & Mathew Ramsey  
Vol. 2292, Pg. 501

S44°50'45"E  
200.98'

+/-8.3671 Acres

Frank & Barbara Rasor  
Vol. 1052, Pg. 809

S44°55'55"E  
206.00'

Martirosyan Enterprises LLC  
Vol. 7838, Pg. 556

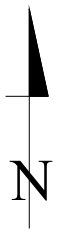
Frank & Barbara Rasor  
Vol. 2458, Pg. 302

856.38'

Martirosyan Enterprises LLC  
Vol. 7838, Pg. 556

S45°04'05"W  
404.00'

N45°44'44"W



CITY OF TERRELL



Exhibit "B"  
Annexation 2023-O  
+/-8.3671 Acres

DATE: 2/15/2023
DRAWN: KW
CHECK:
REMARKS:
SCALE: 1"=200'